



International Journal of Innovative Research in Science Engineering and Technology (IJIRSET)

(A Monthly, Peer Reviewed, Refereed, Scholarly Indexed, Open Access Journal)



Impact Factor: 8.699

Volume 14, Issue 7, July 2025

Vision Empowered System: Virtual Keyboard

Varun Adinath Adhav, Ram Sanjay Sable, Sakshi Nitin Kale, Kiran Patil

Dept. of Information Technology, G. H. Raisoni College of Engineering & Management, Pune, Maharashtra, India

Dept. of Information Technology, G. H. Raisoni College of Engineering & Management, Pune, Maharashtra, India

Dept. of Information Technology, G. H. Raisoni College of Engineering & Management, Pune, Maharashtra, India

Dept. of Information Technology, G. H. Raisoni College of Engineering & Management, Pune, Maharashtra, India

ABSTRACT: In the rapidly advancing field of human- computer interaction, the development of accessible and innovative input methods is paramount. This project introduces the Vision Empowered Suite , an optically operated virtual keyboard designed to enhance accessibility for individuals with limited mobility. Utilizing sophisticated computer vision algorithms, the system detects and tracks eye movements, converting these into precise keyboard inputs. This technology enables users to interact with digital interfaces through eye movements alone, facilitating text input and command execution without physical contact. The Vision Empowered Suite represents a significant advancement in assistive technology, offering a robust alternative to traditional input devices and promoting greater independence for users with physical disabilities. As the technology evolves, further enhancements in accuracy, responsiveness, and user- friendliness are anticipated, paving the way for more inclusive and accessible computing solutions.

KEYWORDS: Human-computer interaction, optically operated virtual keyboard, eye movements, command execution, responsiveness, user-friendliness.

I. INTRODUCTION

In recent years, advancements in computer vision and human-computer interaction have paved the way for innovative input methods, particularly for individuals with limited mobility. The Vision Empowered Suite, featuring an optically operated virtual keyboard, is one such development that leverages eye-tracking technology to provide an alternative input system. This system allows users to interact with digital devices through eye movements, employing advanced algorithms to detect and track these movements, translating them into cursor actions on the screen. When a user fixates on a specific key or area for a predetermined amount of time, the system registers this as a selection, enabling text input or command execution without the need for physical contact. The Vision Empowered Suite offers significant potential for enhancing accessibility, enabling users with physical disabilities to communicate and operate computers more independently. This system represents a pivotal step towards more inclusive technology, providing an essential tool for those who face challenges with traditional input devices. The Vision Empowered Virtual Keyboard is meticulously designed to prioritize the user experience, offering an intuitive and accessible interface that requires no physical interaction. By harnessing the power of eye-tracking technology, this system enables users to effortlessly navigate digital environments with nothing more than the natural movement of their eyes. The simplicity of its design belies the sophistication of its underlying technology, making it not only accessible to individuals with varying levels of technological proficiency but also adaptable to the unique needs of each user. Through a seamless calibration process and customizable settings, the system caters to diverse user preferences, ensuring both precision and comfort. As a result, the interface becomes an extension of the user's gaze, fostering an effortless and fluid interaction that enhances the overall accessibility of digital tools for those with physical disabilities.

II. PROBLEM STATEMENT

Many individuals with physical disabilities struggle to use traditional keyboards and touchscreens, limiting their ability to communicate and operate digital devices independently. By leveraging OpenCV and Python for real-time eye detection, the system will enable users to interact with digital devices through eye movements, enhancing their ability to communicate and operate computers independently.

OBJECTIVES

The Vision Empowered Virtual Keyboard is founded on the aspiration to transform how individuals with physical disabilities engage with digital environments. Its foremost objective is to harness the capabilities of OpenCV and Python to develop a system that can accurately detect and track eye movements in real-time. By employing these sophisticated tools, the project seeks to transcend the limitations of conventional input methods, offering an innovative virtual keyboard that enables users to select keys and input text solely through the movement of their eyes.

This project envisions creating an input solution that bridges the gap for users who face challenges in using traditional keyboards or touchscreens. With inclusivity as a guiding principle, the virtual keyboard is meticulously designed to accommodate a diverse range of communication needs, ensuring that no user is left behind. Customization lies at the heart of this initiative. The system is designed to be highly adaptable, offering adjustable key layouts and sensitivity settings, allowing each user to tailor the interface to their unique preferences and requirements. This attention to personalized experience not only enhances usability but also fosters a sense of empowerment and independence.

Moreover, the project seeks to contribute meaningfully to the development of assistive technologies by promoting digital inclusivity and ensuring equal access to technology for all individuals, regardless of their abilities.

By providing a solution that is both scalable and versatile, the Vision Empowered Virtual Keyboard strives to redefine the landscape of human-computer interaction, ensuring that every user can engage with the digital world with ease and confidence.

Finally, the project is committed to rigorous evaluation, continuously assessing the system's accuracy, responsiveness, and user satisfaction in real-world scenarios. This assessment will guide ongoing improvements, ensuring that the technology not only meets the current needs of its users but also evolves to address future challenges and possibilities.

III. PROPOSED SYSTEM

The proposed system is aimed to enable users to control a virtual keyboard using their eye movements. This system stands as a beacon of hope for individuals with physical disabilities, offering them an intuitive and efficient alternative to traditional input methods such as keyboards and touchscreens. Built upon the principles of accessibility, adaptability, and precision, the proposed system seeks to bridge the gap between users and technology, ensuring that digital environments are no longer a challenge but a pathway to empowerment.

At the heart of this project is the seamless integration of computer vision technology, facilitated by the robust capabilities of OpenCV and Python. The system operates by utilizing a standard camera to capture real-time video input, which is then processed to detect and track eye movements. By identifying key facial landmarks, particularly around the eyes, the system maps the user's gaze onto a virtual keyboard interface. Each movement of the eyes is translated into corresponding actions, allowing users to select keys, input text, and perform navigational tasks, all without the need for physical interaction.

One of the most significant features of this system is its customizability. The virtual keyboard is designed to adapt to the specific needs of each user, offering a range of customization options, such as adjustable key layouts and sensitivity settings. This ensures that the interface is not only accessible to users with varying levels of physical ability but also comfortable and efficient for prolonged use. The system's adaptability is further enhanced by a personalized calibration process, which tailors the system's sensitivity and responsiveness to the unique characteristics of the user's gaze. The proposed system's underlying architecture is built upon three fundamental layers:

The Presentation Layer, which includes the virtual keyboard interface. This interface is designed to be visually intuitive and responsive, ensuring a fluid interaction with the user.

The Application Layer, where the core functionality resides, handles eye detection, gaze estimation, and mapping. The integration of real-time video processing ensures that the system responds to the user's gaze movements without noticeable lag, delivering a seamless user experience.

By incorporating advanced machine learning algorithms, the accuracy of gaze estimation can be further refined, making

the system even more responsive and adaptable to a broader range of users.

IV. METHODOLOGY

The methodology underpinning the Vision Empowered Virtual Keyboard is grounded in both the theoretical principles of human-computer interaction and the pragmatic demands of modern assistive technologies. This project follows a comprehensive and structured research design, carefully crafted to ensure the accuracy, adaptability, and usability of the system. The primary objective is to create an interface that enables users to control a virtual keyboard through eye movements, facilitated by advanced computer vision techniques. At the heart of the project lies the system development phase, where the foundation of the Vision Empowered Virtual Keyboard was established. This phase involved the integration of OpenCV and Python, two pivotal technologies, to develop an algorithm capable of detecting and tracking eye movements in real time. Dlib facial landmark detection were employed to ensure accurate recognition of eye positions, while image frames from the webcam were processed continuously to map the user's gaze onto the virtual keyboard. By translating the natural gaze into digital inputs, the system enables a seamless, hands-free interaction with the virtual interface. A critical element of the research design is the customization and calibration process, wherein the system is tailored to the unique gaze patterns and physiological characteristics of each user. This step is essential to ensuring that the system functions optimally across diverse users and varying conditions, including differences in lighting and eye movement precision. Calibration is conducted at the outset, and the system allows for ongoing adjustments to accommodate user-specific needs, thus enhancing both accuracy and comfort. Data collection is integral to evaluating the system's performance in real-world scenarios. Users were invited to interact with the virtual keyboard, providing valuable insights into its effectiveness, ease of use, and responsiveness. During these sessions, the system's ability to detect and map gaze points accurately was continuously recorded, and both quantitative and qualitative data were gathered. This includes metrics on detection precision, typing speed, and error rates, as well as user feedback on overall satisfaction and interface intuitiveness. Data analysis involved quantitative assessments of the system's performance. Statistical techniques were applied to evaluate the accuracy of eye-tracking across different users, the effectiveness of gaze mapping to the correct keyboard inputs, and the overall speed of text entry. These quantitative results were supplemented by qualitative data drawn from user surveys, where participants reflected on their experience with the system. Their feedback not only informed immediate improvements but also provided a valuable perspective on the system's potential to support users with diverse physical abilities.

V. IMPLEMENTATION

The implementation of the Vision Empowered Virtual Keyboard relies on a robust combination of advanced algorithms, specialized tools, and cutting-edge hardware to ensure that the system performs with precision and efficiency. This subsection summarizes the core methods, algorithms, and tools utilized during the development and implementation of the proposed system, highlighting the essential components that bring the project to fruition.

A. 1.Algorithms:

CNN

2.Packages:

DLib

CMake

Labelling

3.Modules

OpenCV

NumPy

Pandas

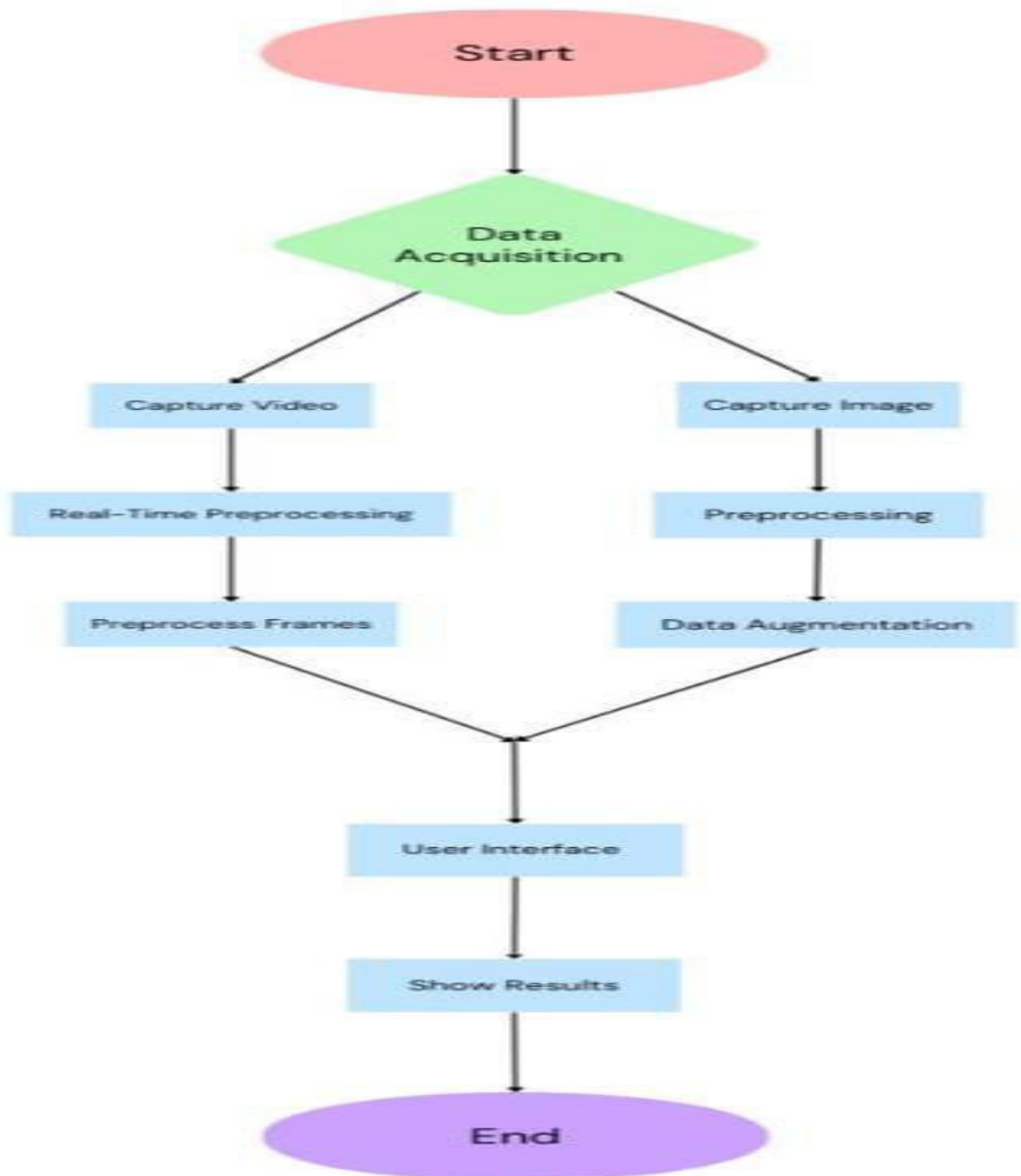
Matplotlib

4.Hardware

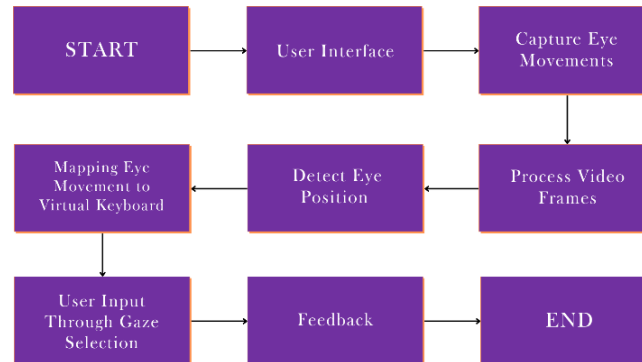
OS: Windows/MacOS/Linux

CPU: Intel i3 10th Gen or AMD Ryzen 3 equivalent.

GPU: Nvidia GeForce MX230 equivalent.

B. Diagrams**1. Architecture Flowchart Diagram.**

Workflow Diagram



C. Equations

There are several mathematical equations and concepts that are implicitly used in the project for detecting eye movements, estimating gaze direction, and determining blinking. These mathematical aspects should be clearly articulated in your research paper to explain the technical foundation of the project. Below are the key mathematical equations likely employed and what needs to be documented. Mathematical Equations in the Project:

Euclidean Distance for Eye Detection: The system detects the position of the eyes using facial landmarks, which involves calculating the Euclidean distance between various points around the eyes. The formula used for calculating the horizontal and vertical distances between key points (for blinking detection) is:

$$d = \sqrt{(x_2 - x_1)^2 + (y_2 - y_1)^2}$$

The syntax for the above used formula is as follows:

hor_line_length = hypot((left_point[0] - right_point[0]), (left_point[1] - right_point[1])) ver_line_length = hypot((center_top[0] - center_bottom[0]), (center_top[1] - center_bottom[1]))

This equation is used to calculate:

Horizontal distance: Between the leftmost and rightmost points of the eye.

Vertical distance: Between the topmost and bottommost points of the eye. These distances are crucial for determining the blinking ratio and assessing whether the eyes are open or closed.

Blinking Ratio: The blinking ratio compares the horizontal distance between the corners of the eyes with the vertical distance between the upper and lower eyelids:

$$\text{Blinking Ratio} = \frac{\text{Horizontal Line Length}}{\text{Vertical Line Length}}$$

Gaze Ratio: The code calculates a gaze ratio to determine the user's gaze direction. The formula used compares the ratio of the number of white pixels (representing the eye's position) on the left and right sides of the eye:

$$\text{Gaze Ratio} = \frac{(\text{left_side_white})}{(\text{ride_side_white})}$$

VII. EXPECTED OUTCOMES

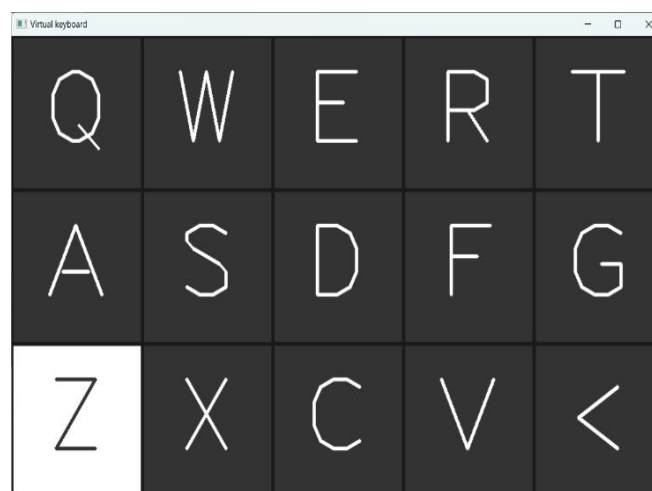
This project is poised to deliver a fully realized Vision Empowered Virtual Keyboard, an innovative system designed to provide users with the ability to type and navigate digital environments through the precision of their eye movements. At its core, the project seeks to significantly improve the accessibility of technology for individuals with physical disabilities. Through this endeavour, we aim to empower users by offering them a tool that not only broadens their capacity to communicate but also fosters a deeper sense of autonomy and digital agency.

The foremost outcome of this project will be the development of a functional prototype, crafted to operate in real time with high levels of accuracy. This prototype will ensure the precise detection and mapping of eye movements, transforming them into seamless interactions with a virtual keyboard. The system will be able to recognize subtle shifts in gaze and respond swiftly, delivering an experience that is both responsive and intuitive.

A key aspect of the expected outcomes is the creation of a user-friendly interface that is as adaptable as it is accessible. The interface will offer customization options, allowing it to be tailored to the specific needs of each user. This flexibility is paramount in ensuring that individuals from a variety of backgrounds and with different physical abilities can engage with the system in a way that is both comfortable and efficient. By refining the interface for ease of use, the system will promote smoother interactions with digital environments, offering users an intuitive gateway to the digital world.

Another significant outcome is the increase in accessibility that this project promises. The Vision Empowered Virtual Keyboard will serve as a reliable alternative input method for users who are unable to operate traditional keyboards or touchscreens. The system is designed with adaptability in mind, laying a solid foundation for further technological advancements. Future iterations of the project may see the integration of sophisticated machine learning algorithms, which will refine and improve the accuracy of gaze estimation, ensuring the system becomes even more attuned to the nuances of user behaviour. Lastly, this project is expected to contribute meaningfully to the evolution of assistive technology. As we strive to push the boundaries of what is possible, the Vision Empowered Virtual Keyboard will serve as a testament to the power of inclusive design. In doing so, this project will help to reshape the landscape of human-computer interaction, ensuring that technology is more accessible to all individuals, regardless of their physical capabilities.

2.Right Side Keyboard Interface Window



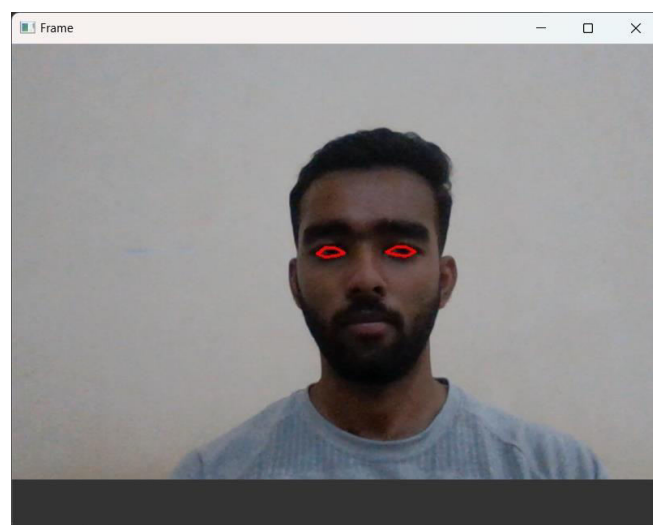
3. Left Side Keyboard Interface Window



4. Text Output Whiteboard Interface Window

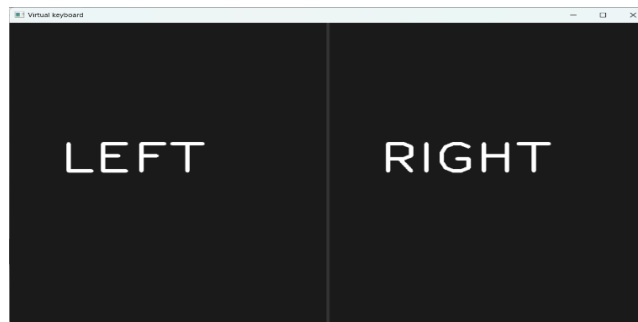


5. Camera Frame Window (Eyes Detected)

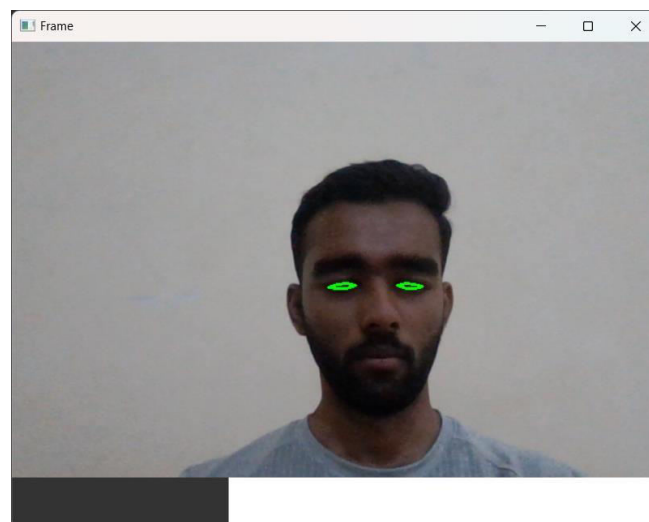


VIII. RESULTS

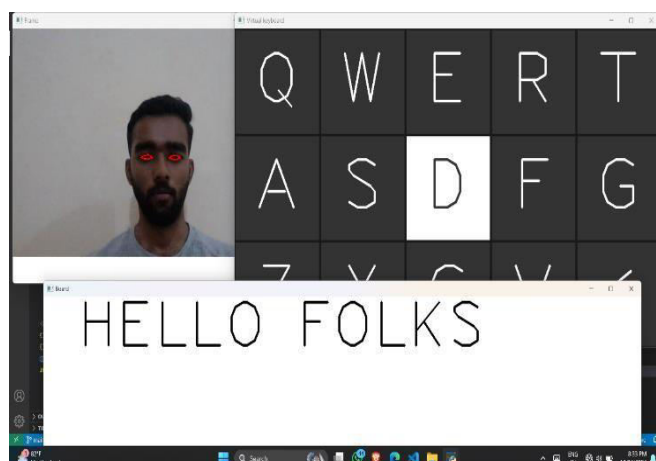
1) Keyborad Side Selection Interface Window



2) Camera Frame Window (Blinking of Eyes Detected)



3) Complete Setup Interface Windows



IX. CONCLUSION

The Vision Empowered Suite: Virtual Keyboard represents a significant stride in the realm of assistive technology, offering a novel, intuitive solution for individuals with physical disabilities to interact with digital environments. This project has not only addressed the pressing need for greater accessibility in human-computer interaction but has also demonstrated the profound potential of combining computer vision with real-time user interfaces. By harnessing the power of OpenCV and Dlib and integrating advanced algorithms for eye detection and gaze estimation, the system enables seamless control through the simple movement of the eyes. This technology has the capacity to transform daily tasks, empowering individuals with limited mobility to navigate digital platforms with independence and ease. The system's adaptability, user-friendly interface, and real-time responsiveness stand as testaments to its practicality and relevance in addressing modern accessibility challenges. Moreover, this project has laid the groundwork for future enhancements. The scalability of the system, with the potential integration of machine learning algorithms, opens new possibilities for improving accuracy and broadening its usability across different devices and operating systems. Its continued development will undoubtedly contribute to the growing field of assistive technologies, fostering a more inclusive and equitable digital landscape.

In conclusion, the Vision Empowered Virtual Keyboard transcends its technical functionality; it is a manifestation of the principle that technology should be accessible to all, regardless of physical limitations. This project reflects a vision of a more inclusive future, where the digital world becomes a realm of opportunity and empowerment for every individual.

X. ACKNOWLEDGEMENT

We would like to express our deepest gratitude to Mrs. Kiran Patil, our project supervisor for their invaluable guidance, insightful feedback, and constant support throughout the development of the Vision Empowered Suite. Their expertise has been crucial in shaping this work. I wish to extend my heartfelt gratitude to the faculty members of the Department of Information Technology for their academic mentorship and for providing the knowledge and resources that formed the foundation of this work. Their commitment to excellence and innovation has greatly influenced the quality of this project. I am grateful to my co-researchers and colleagues for their collaboration, constructive feedback, and willingness to share ideas, which greatly contributed to the refinement of the system. Their support throughout the process has been invaluable.

This research was funded by the {}. I would like to thank the administrative staff at the G. H. Raisoni College of Engineering & Management for their assistance with logistics and paperwork. I also appreciate the constructive feedback provided by the anonymous reviewers, which greatly improved the quality of this paper.

REFERENCES

1. N. Ananthi, N. Krish and R. Bharanidharan, "Gaze-Based Communication Device for Patients with Locked-In Syndrome," 2024 2nd International Conference on Networking and Communications (ICNWC), Chennai, India, 2024, pp. 1-8, doi: 10.1109/ICNWC60771.2024.10537277.
2. S. Ghosh, A. Dhall, M. Hayat, J. Knibbe and Q. Ji, "Automatic Gaze Analysis: A Survey of Deep Learning Based Approaches," in IEEE Transactions on Pattern Analysis and Machine Intelligence, vol. 46, no. 1, pp. 61- 84, Jan. 2024, doi: 10.1109/TPAMI.2023.3321337.
3. W. H. Chia, Y. Cai and A. Ho, "Multimodal Interaction with Gaze and Controller Gesture," 2022 IEEE International Symposium on Mixed and Augmented Reality Adjunct (ISMAR-Adjunct), Singapore, Singapore, 2022, pp. 518-523, doi: 10.1109/ISMAR- Adjunct57072.2022.00110.
4. Z. Wang, H. Wang, H. Yu and F. Lu, "Interaction With Gaze, Gesture, and Speech in a Flexibly Configurable Augmented Reality System," in IEEE Transactions on Human-Machine Systems, vol. 51, no. 5, pp. 524-534, Oct. 2021, doi: 10.1109/THMS.2021.3097973.
5. S. Wibirama, S. Murnani, N. A. Setiawan and H. Nurlatifa, "A Survey of Event Detection Methods for Eye Movements Classification in Smooth-Pursuit-Based Interactive Applications," 2020 International Symposium on Community-centric Systems (CcS), Tokyo, Japan, 2020, pp. 1-6, doi:10.1109/CcS49175.2020.9231384.



INTERNATIONAL
STANDARD
SERIAL
NUMBER
INDIA



INTERNATIONAL JOURNAL OF INNOVATIVE RESEARCH

IN SCIENCE | ENGINEERING | TECHNOLOGY

 9940 572 462  6381 907 438  ijirset@gmail.com



www.ijirset.com

Scan to save the contact details